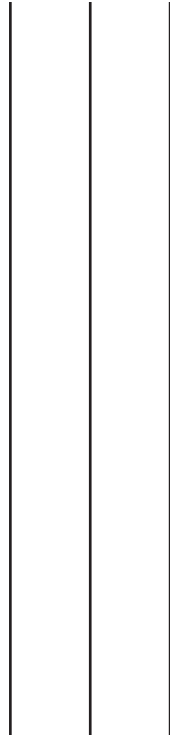


Place
Stamp
Here

Autumn Chase Townhomes

From Interstate Hwy 35 exit Aquarena Springs Dr. (exit # 206) and go east. Autumn Chase will be the first apartment community on your left. You may also take the access road to IH35 North and Autumn Chase will be on your right past Aquarena Springs Drive.



Autumn Chase TOWNHOMES

*Location, Location,
Location...*

**1606 N I-H 35
San Marcos, TX 78666**

**Tel: (512) 754-6144
Fax: (512) 754-6153**

Email:
AutumnChase@myapartmenthome.com

Website:
www.myapartmenthome.com



**Tel: (512) 754-6144
Fax: (512) 754-6153**

Email:
AutumnChase@myapartmenthome.com

Website:
www.myapartmenthome.com

**Autumn Chase
TOWNHOMES**
1606 N I-H 35
San Marcos, TX 78666



Autumn Chase TOWNHOMES

Autumn Chase Townhomes are ideally located in close proximity to many of the premier attractions in San Marcos. Autumn Chase's strategic location provides easy access to schools, shopping, entertainment and business just moments away. Come home to privileged living in our spacious one and two bedroom townhomes.

Interior Amenities

- Washer/Dryer in Each Unit
- Unique 1 and 2 bedroom townhomes with no one above
- Enclosed patios
- Dishwasher
- Ceiling fans
- Microwaves *
- Faux wood blinds *
- Cable and high speed internet available

Community Amenities

- Nestled among the native oaks
- 2 resort style pools
- Sand volleyball
- Fitness center
- On shuttle bus route to Texas State
- Cozy neighborhood setting
- Small pets welcome
- BBQ area

* In select units

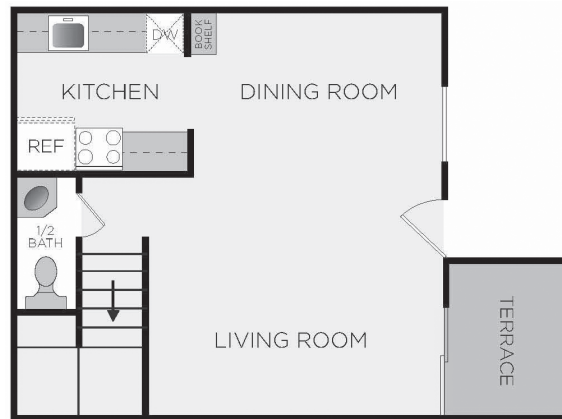
ONE BEDROOM

650-690 Sq. Ft.* 1-1/2 Bath

Rent _____ Deposit _____



Upper Level

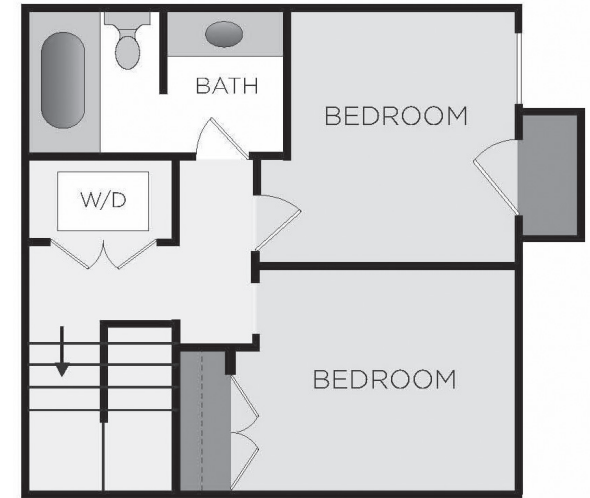


Lower Level

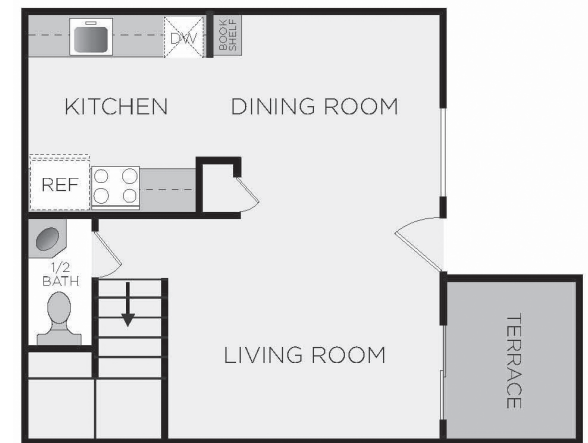
TWO BEDROOM

850-890 Sq. Ft.* 1-1/2 Bath

Rent _____ Deposit _____



Upper Level



Lower Level

* Square footage is approximate

